

CHAMBERS COUNTY
 LAT. 29° 40' 00.00" N
 LONG. 94° 55' 36.00" W

j:\110005\11407 TGS CEDAR POINT BARGE DOCK\DRAWINGS\PERMIT - 8_5X11\11407-P1.DWG

CHRISTOPHER S. GUY P.E.
 TX PE #116477

PRELIMINARY - FOR PERMIT PURPOSES ONLY

REV
0



LANIER & ASSOCIATES
 CONSULTING ENGINEERS
 INCORPORATED

LA: C-1120 TX: F-2981
 NEW ORLEANS, LA • BEAUMONT, TX

TGS CEDAR PORT PARTNERS, L.P.
 CEDAR BAYOU TEXAS

**CEDAR PORT BARGE DOCK
 & BARGE FLEETING
 VICINITY MAP**

DATE AUG. '20
 DESIGN CSG
 DRAWN PJC
 CHECK DLC
 JOB NO. 11407
 SHEET No.
1 OF 11

J:\11000S\11407 TGS CEDAR POINT BARGE DOCK\DRAWINGS\PERMIT - 8_5X11\11407-P2.DWG



LANIER & ASSOCIATES
CONSULTING ENGINEERS
INCORPORATED

LA: C-1120
NEW ORLEANS, LA

TX: F-2981
BEAUMONT, TX

TGS CEDAR PORT PARTNERS, L.P.
CEDAR BAYOU TEXAS

**CEDAR PORT BARGE DOCK
& BARGE FLEETING
LOCATION MAP**

| | |
|-----------|----------|
| DATE | AUG. '20 |
| DESIGN | OSG |
| DRAWN | PJC |
| CHECK | DLC |
| JOB NO. | 11407 |
| SHEET No. | 2 |
| | OF 11 |

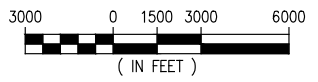
CHRISTOPHER S. GUY P.E.
TX PE #116477

PRELIMINARY - FOR PERMIT PURPOSES ONLY

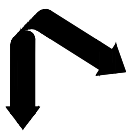
REV 0



LOCATION MAP



J:\11000S\11407 TGS CEDAR POINT BARGE DOCK\DRAWINGS\PERMIT - 8_5X11\11407-P3.DWG



LANIER & ASSOCIATES
CONSULTING ENGINEERS
INCORPORATED

LA: C-1120
NEW ORLEANS, LA

TX: F-2981
BEAUMONT, TX

TGS CEDAR PORT PARTNERS, L.P.
TEXAS

CEDAR BAYOU

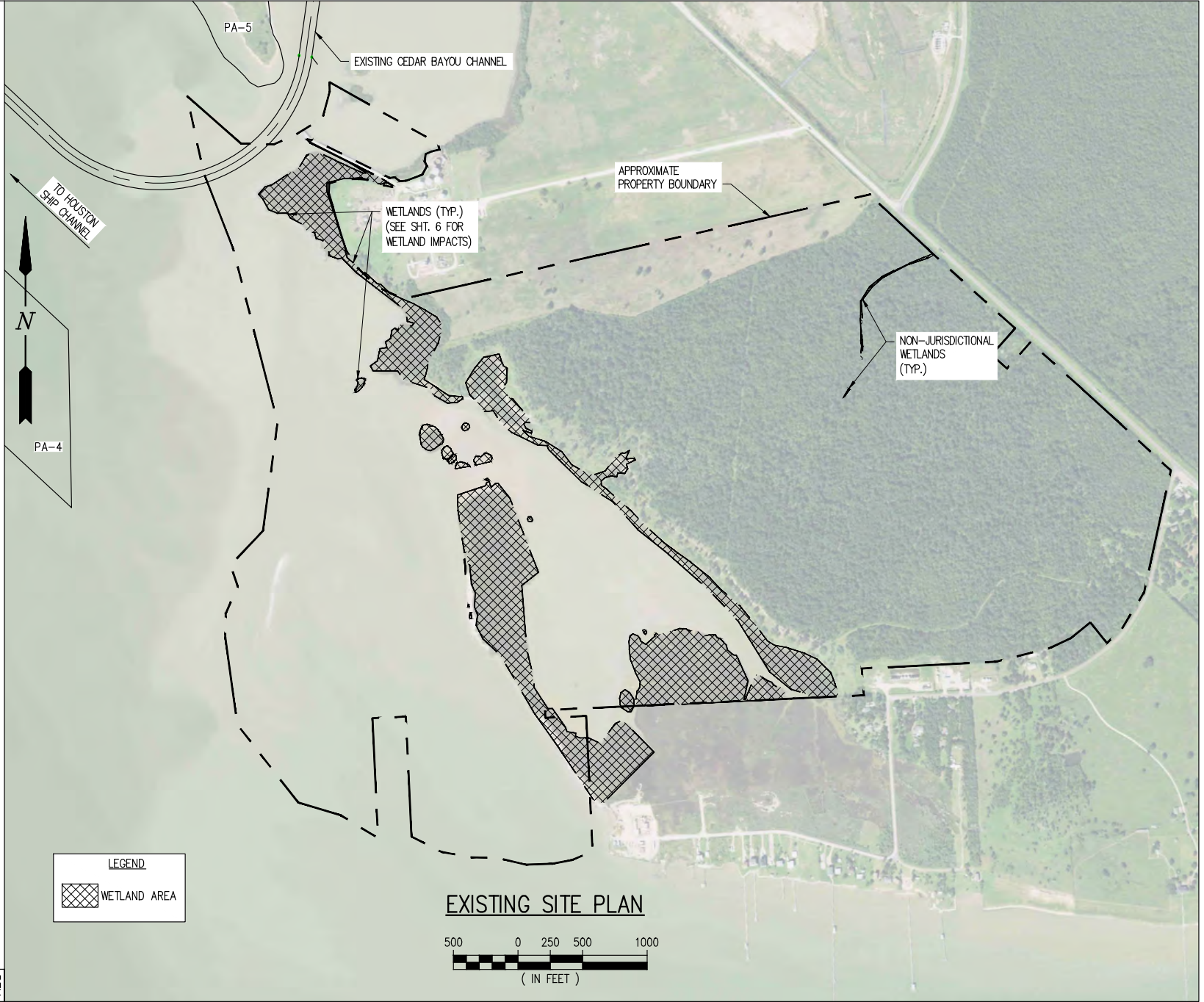
**CEDAR PORT BARGE DOCK
& BARGE FLEETING
EXISTING SITE PLAN**

| | |
|------------|----------|
| DATE: | AUG. '20 |
| DESIGN: | GSG |
| DRAWN: | PJC |
| CHECK: | DLC |
| JOB NO.: | 11407 |
| SHEET No.: | 3 |
| | OF 11 |

CHRISTOPHER S. GUY P.E.
TX PE #116477

PRELIMINARY - FOR PERMIT PURPOSES ONLY

REV 0



J:\11000S\11407 TGS CEDAR POINT BARGE DOCK\DRAWINGS\PERMIT - 8_5X11\11407-P5.DWG

LANIER & ASSOCIATES
CONSULTING ENGINEERS
INCORPORATED

LA: C-1120 TX: F-2981
NEW ORLEANS, LA • BEAUMONT, TX

TGS CEDAR PORT PARTNERS, L.P.
CEDAR BAYOU TEXAS

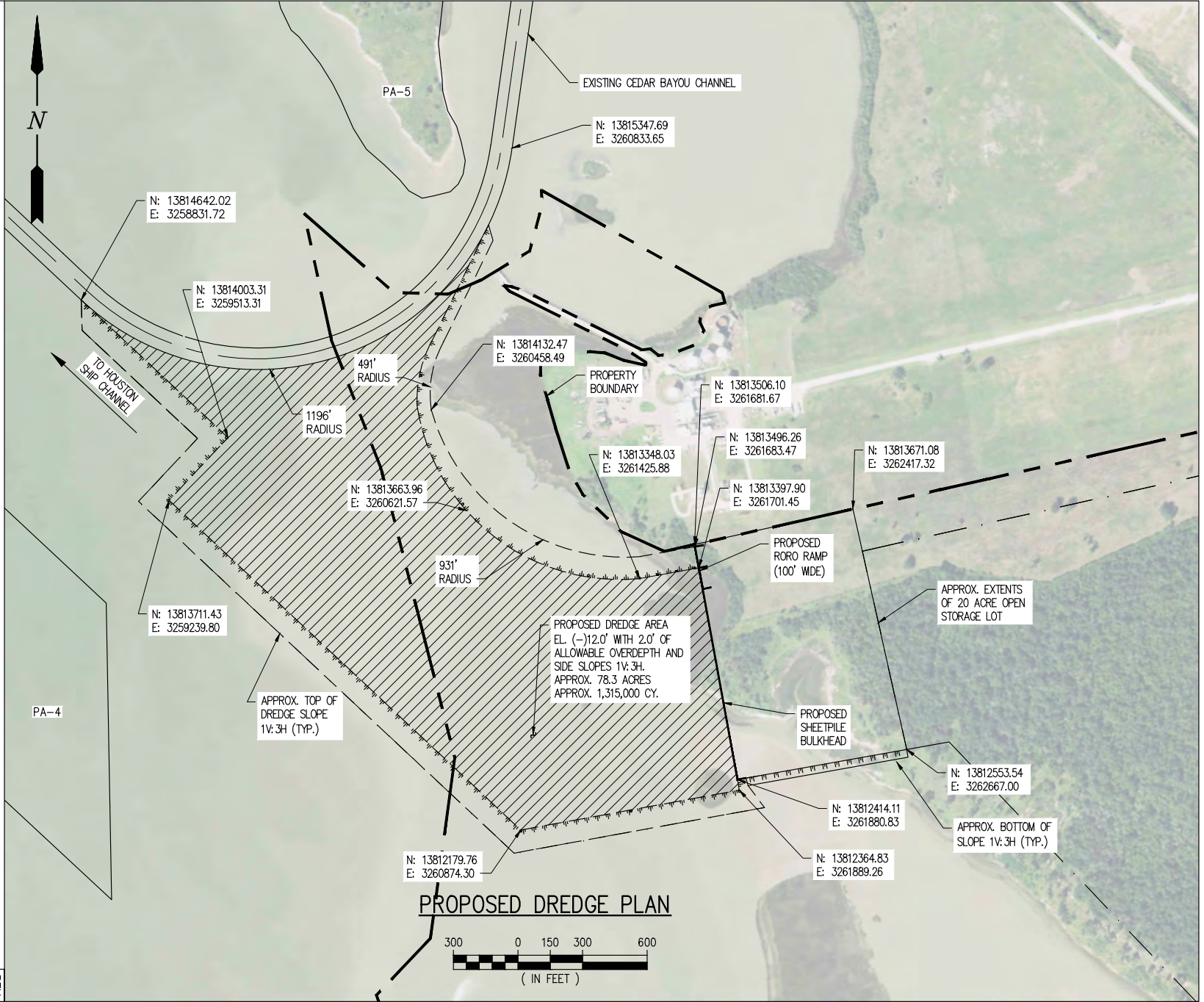
CEDAR PORT BARGE DOCK & BARGE FLEETING PROPOSED DREDGE PLAN

| | |
|-----------|----------|
| DATE | AUG. '20 |
| DESIGN | OSG |
| DRAWN | PJC |
| CHECK | DLC |
| JOB NO. | 11407 |
| SHEET No. | 5 OF 11 |

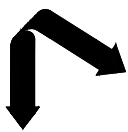
CHRISTOPHER S. GUY P.E.
TX PE #116477

PRELIMINARY - FOR PERMIT PURPOSES ONLY

REV 0



J:\11000S\11407 TGS CEDAR POINT BARGE DOCK\DRAWINGS\PERMIT - 8_5X11\11407-P7.DWG

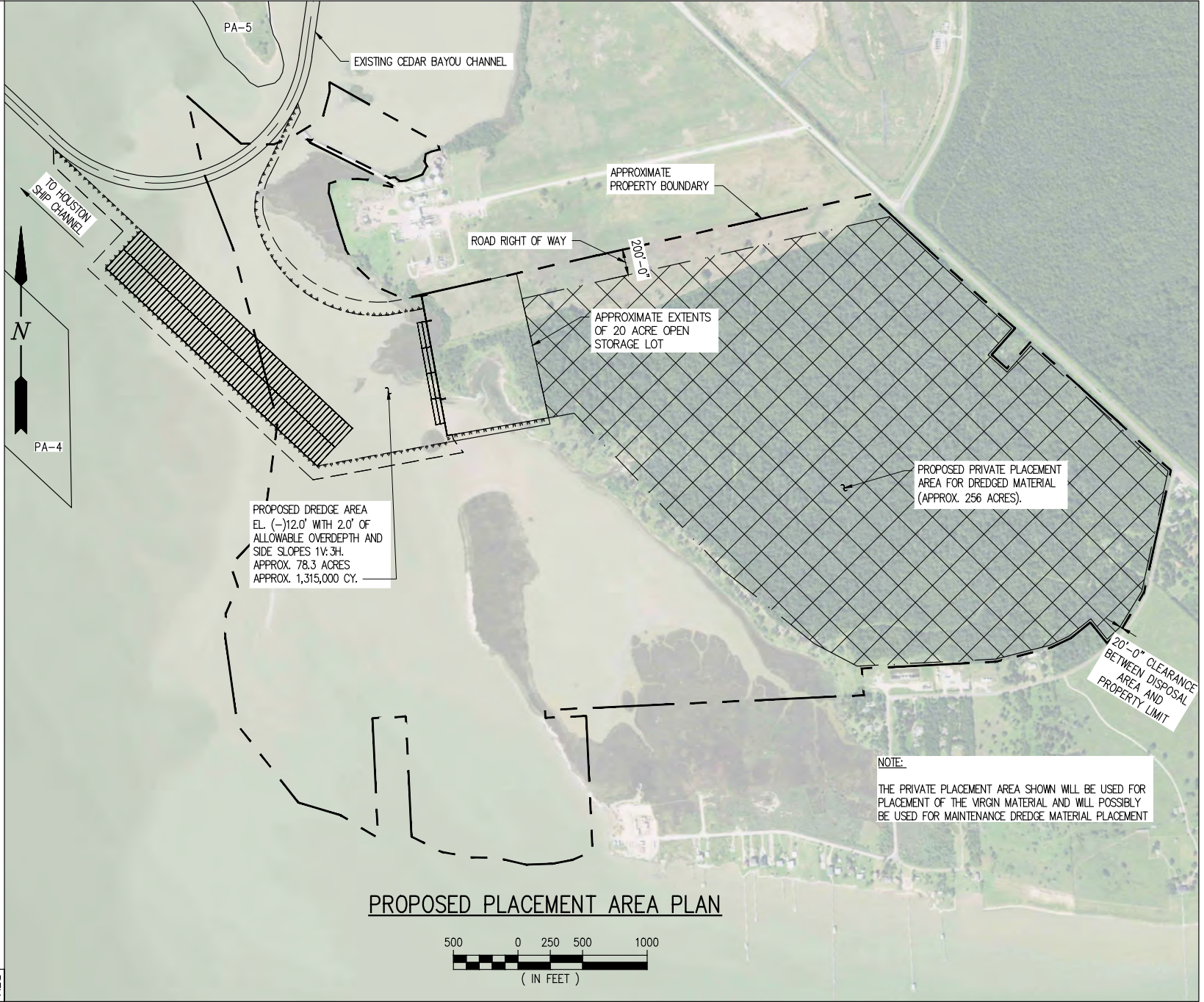


LANIER & ASSOCIATES
CONSULTING ENGINEERS
INCORPORATED
LA: C-1120 TX: F-2981
NEW ORLEANS, LA • BEAUMONT, TX

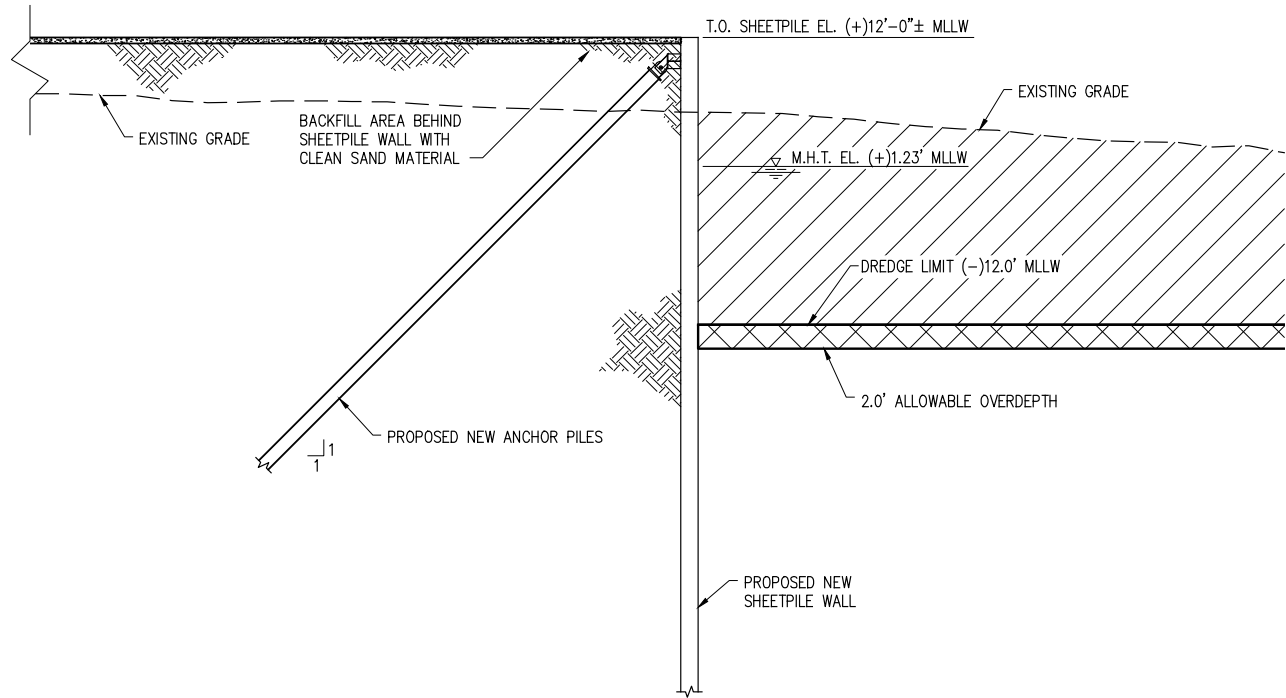
TGS CEDAR PORT PARTNERS, L.P. TEXAS
CEDAR BAYOU
CEDAR PORT BARGE DOCK & BARGE FLEETING
PROPOSED PRIVATE PLACEMENT AREA

| | |
|-----------|----------|
| DATE | AUG. '20 |
| DESIGN | OSG |
| DRAWN | PJC |
| CHECK | DLC |
| JOB NO. | 11407 |
| SHEET No. | 7 OF 11 |

CHRISTOPHER S. GUY P.E.
TX PE #16477
PRELIMINARY - FOR PERMIT PURPOSES ONLY
REV 0



PROPOSED PLACEMENT AREA PLAN



SECTION A
 1" = 15' P4

j:\110005\11407 TGS CEDAR POINT BARGE DOCK\DRAWINGS\PERMIT - 8_5X11\11407-P8.DWG

CHRISTOPHER S. GUY P.E.
 TX PE #116477

PRELIMINARY - FOR PERMIT PURPOSES ONLY

REV
 0



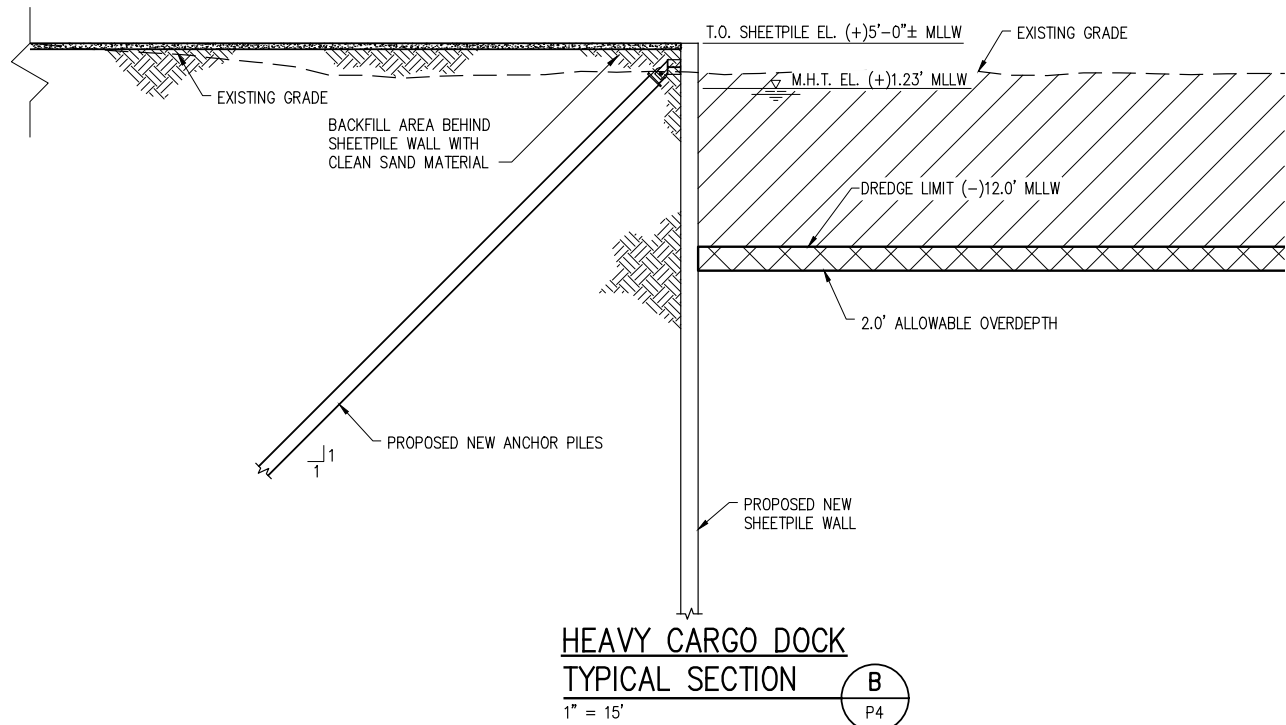
LANIER & ASSOCIATES
 CONSULTING ENGINEERS
 INCORPORATED

LA: C-1120 TX: F-2981
 NEW ORLEANS, LA • BEAUMONT, TX

TGS CEDAR PORT PARTNERS, L.P.
 CEDAR BAYOU TEXAS

**CEDAR PORT BARGE DOCK
 & BARGE FLEETING
 TYPICAL CROSS SECTION**

DATE AUG. '20
 DESIGN CSG
 DRAWN PJC
 CHECK DLC
 JOB NO. 11407
 SHEET No.
8 OF 11



j:\11000S\11407 TGS CEDAR POINT BARGE DOCK\DRAWINGS\PERMIT - 8_5X11\11407-P9.DWG

CHRISTOPHER S. GUY P.E.
TX PE #116477

PRELIMINARY - FOR PERMIT PURPOSES ONLY

REV
0



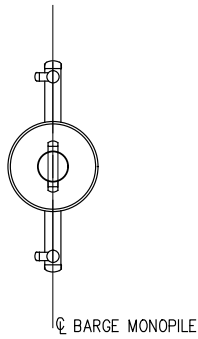
LANIER & ASSOCIATES
CONSULTING ENGINEERS
INCORPORATED

LA: C-1120 TX: F-2981
NEW ORLEANS, LA • BEAUMONT, TX

TGS CEDAR PORT PARTNERS, L.P.
CEDAR BAYOU TEXAS

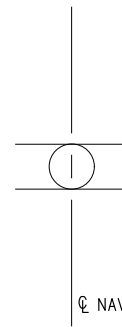
**CEDAR PORT BARGE DOCK
& BARGE FLEETING
HEAVY CARGO DOCK - SECTION**

| | |
|-----------|----------|
| DATE | AUG. '20 |
| DESIGN | CSG |
| DRAWN | PJC |
| CHECK | DLC |
| JOB NO. | 11407 |
| SHEET No. | 9 OF 11 |



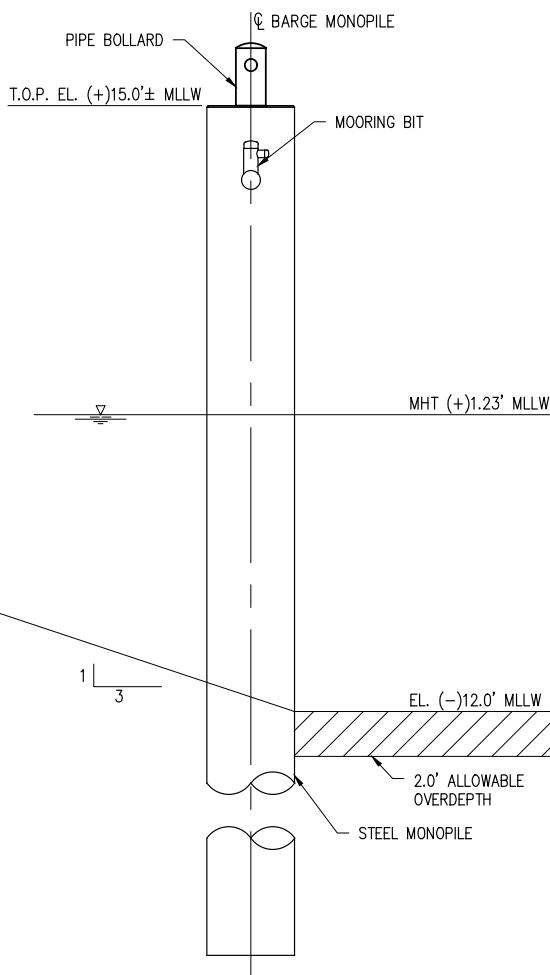
BARGE MONOPILE PLAN

N.T.S.



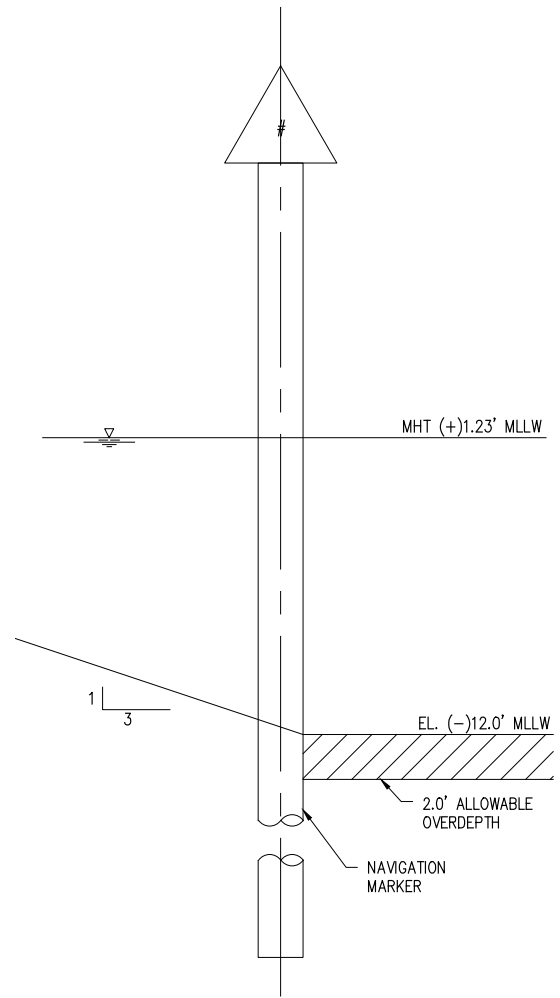
NAVIGATION MARKER PILE PLAN

N.T.S.



BARGE MONOPILE ELEVATION

N.T.S.
(4 REQUIRED)



NAVIGATION MARKER PILE ELEVATION

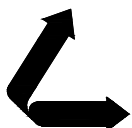
N.T.S.
(11 REQUIRED)

j:\110005\11407 TGS CEDAR POINT BARGE DOCK\DRAWINGS\PERMIT - 8_5X11\11407-P10.DWG

CHRISTOPHER S. GUY P.E.
TX PE #116477

PRELIMINARY - FOR PERMIT PURPOSES ONLY

REV
0



LANIER & ASSOCIATES
CONSULTING ENGINEERS
INCORPORATED

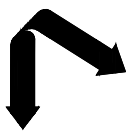
LA: C-1120 TX: F-2981
NEW ORLEANS, LA • BEAUMONT, TX

TGS CEDAR PORT PARTNERS, L.P.
CEDAR BAYOU TEXAS

**CEDAR PORT BARGE DOCK
& BARGE FLEETING
PROPOSED NEW STRUCTURES**

| | |
|-----------|----------|
| DATE | AUG. '20 |
| DESIGN | CSG |
| DRAWN | PJC |
| CHECK | DLC |
| JOB NO. | 11407 |
| SHEET No. | 10 OF 11 |

J:\11000S\11407 TGS CEDAR POINT BARGE DOCK\DRAWINGS\PERMIT - 8_5X11\11407-P11.DWG

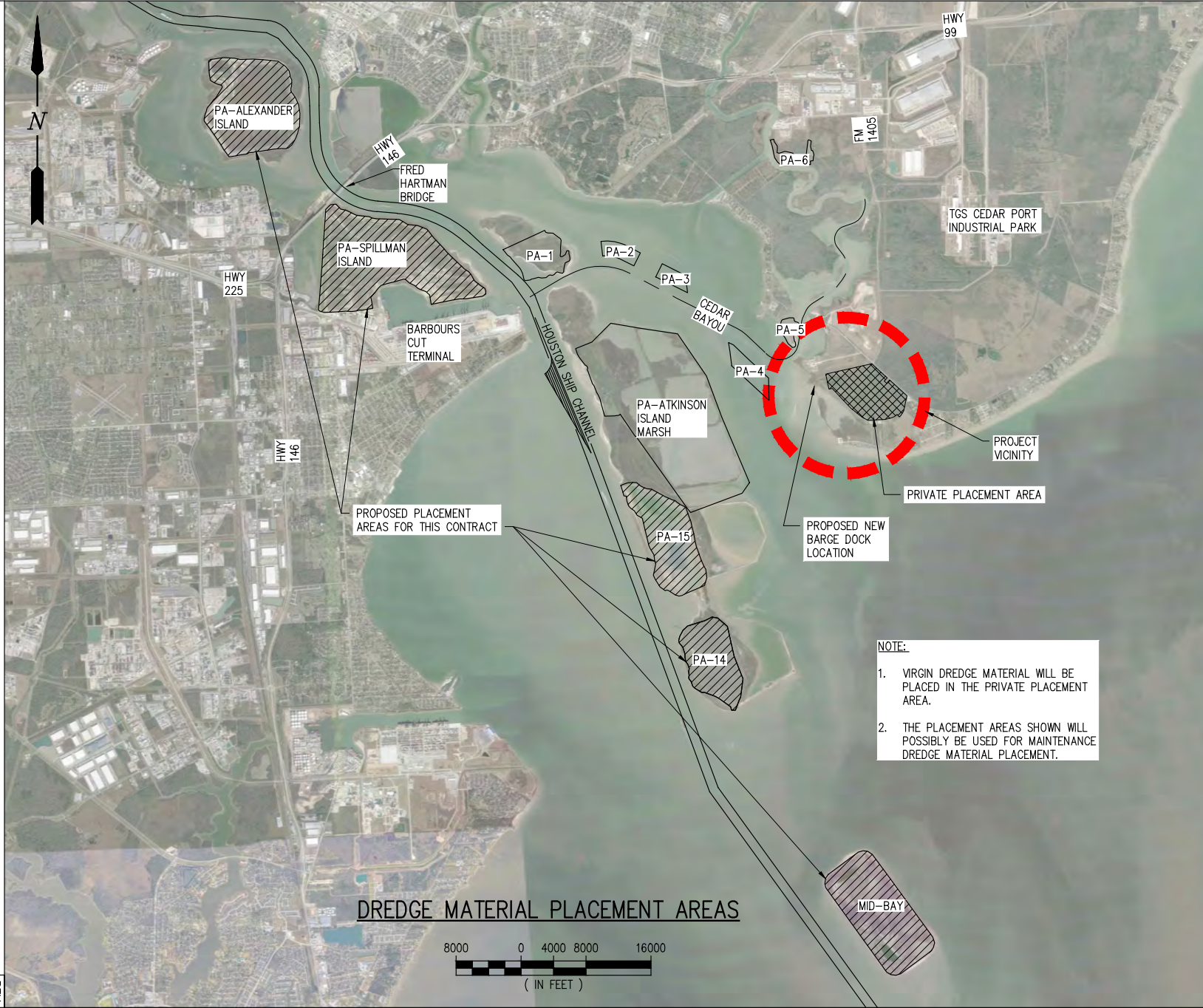


LANIER & ASSOCIATES
CONSULTING ENGINEERS
INCORPORATED
LA: C-1120 TX: F-2981
NEW ORLEANS, LA • BEAUMONT, TX

TGS CEDAR PORT PARTNERS, L.P. TEXAS
CEDAR BAYOU
**CEDAR PORT BARGE DOCK
& BARGE FLEETING
DREDGE MATERIAL PLACEMENT AREAS**

| | |
|-----------|----------|
| DATE | AUG '20 |
| DESIGN | GSG |
| DRAWN | PJC |
| CHECK | DLC |
| JOB NO. | 11407 |
| SHEET No. | 11 OF 11 |

CHRISTOPHER S. GUY P.E.
TX PE #116477
PRELIMINARY - FOR PERMIT PURPOSES ONLY
REV 0



NOTE:

1. VIRGIN DREDGE MATERIAL WILL BE PLACED IN THE PRIVATE PLACEMENT AREA.
2. THE PLACEMENT AREAS SHOWN WILL POSSIBLY BE USED FOR MAINTENANCE DREDGE MATERIAL PLACEMENT.

DREDGE MATERIAL PLACEMENT AREAS